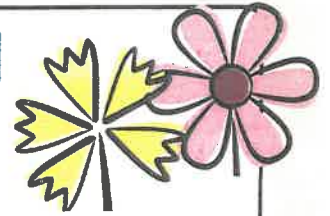




# Crownpoint Community School End of Year Newsletter May 20, 2026



## Have a wonderful Safe Summer!


This 2025-2026 school year has come to a close. Our year went by fast this year. Before we know it August will be here therefore, please have your child/ren continue reading, writing and practicing math facts. Some possible changes for next year that will be submitted as a recommendation to our solicitor for CCS to implement a clear bag policy, Vape monitors, our attendance policy, and revising our the discipline policy. If there are changes we will let you now at the beginning of the school year.



## Great job CCS!! Congratulations!!

### Accountability Report

BIE schools recieved their Accountability Report recently. This report tells us where we are ranking against other BIE schools. Our results based off of SY 24-25 data is: **Meets or Exceeds Expectations!!!!**

We recieved 73 out of 100 pts. This is where the points were given: 

Indicator	CCS Pts recieved	Max pts we could get
English Language Arts test in April 2024, 3rd-8 <sup>th</sup> grade test	22	25
Math test	19	25
Science	15	20
ELL test: WIDA given to K-8 <sup>th</sup> grades	11	15
Chronic Abseneeism	6	15
Total	73	100

### Cognia Reaccreditation

We also got our Reaccreditation report back, and **we passed**, therefore CCS is Reaccredited. All BIE school also go through this process. They are looking at data, we have to show proof with artifacts, narratives, interviews, etc. to show them we are implementing the criteria they have.

These goals we are accomplishing is the reason why we need all students here everyday so they can learn to do great on their reading, math, Science and WIDA tests every year. Expectations seem to get harder every year, but we can't change that, but we will keep encouraging, reminding so our students can be lifelong learners and successful.

School Calendar for 2026-2027 is attached.

Thanks for a wonderful year! Ms. Whitehair :





# 2026-2027 School Year Calendar

**"Commit, Cultivate, Succeed"**

July 2026						
Su	M	T	W	Th	F	S
			1	2	3	4
5	6	7	8	9	10	11
12	13	14	15	16	17	18
19	20	21	22	23	24	25
26	27	28	29	30	31	

September 2026						
Su	M	T	W	Th	F	S
		1	2	3	4	5
6	7	8	9	10	11	12
13	14	15	16	17	18	19
20	21	22	23	24	25	26
27	28	29	30			

November 2026						
Su	M	T	W	Th	F	S
1	2	3	4	5	6	7
8	9	10	11	12	13	14
15	16	17	18	19	20	21
22	23	24	25	26	27	28
29	30					

August 2026						
Su	M	T	W	Th	F	S
						1
2	3	4	5	6	7	8
9	10	11	12	13	14	15
16	17	18	19	20	21	22
23	24	25	26	27	28	29
30	31					

October 2026						
Su	M	T	W	Th	F	S
				1	2	3
4	5	6	7	8	9	10
11	12	13	14	15	16	17
18	19	20	21	22	23	24
25	26	27	28	29	30	31

December 2026						
Su	M	T	W	Th	F	S
		1	2	3	4	5
6	7	8	9	10	11	12
13	14	15	16	17	18	19
20	21	22	23	24	25	26
27	28	29	30	31		

January 2027						
Su	M	T	W	Th	F	S
					1	2
3	4	5	6	7	8	9
10	11	12	13	14	15	16
17	18	19	20	21	22	23
24	25	26	27	28	29	30
31						

March 2027						
Su	M	T	W	Th	F	S
1	2	3	4	5	6	
7	8	9	10	11	12	13
14	15	16	17	18	19	20
21	22	23	24	25	26	27
28	29	30	31			

May 2027						
Su	M	T	W	Th	F	S
						1
2	3	4	5	6	7	8
9	10	11	12	13	14	15
16	17	18	19	20	21	22
23	24	25	26	27	28	29
30	31					

February 2027						
Su	M	T	W	Th	F	S
	1	2	3	4	5	6
7	8	9	10	11	12	13
14	15	16	17	18	19	20
21	22	23	24	25	26	27
28						

April 2027						
Su	M	T	W	Th	F	S
				1	2	3
4	5	6	7	8	9	10
11	12	13	14	15	16	17
18	19	20	21	22	23	24
25	26	27	28	29	30	

June 2027						
Su	M	T	W	Th	F	S
		1	2	3	4	5
6	7	8	9	10	11	12
13	14	15	16	17	18	19
20	21	22	23	24	25	26
27	28	29	30			

**July 2026**

28 Staff returns (Adm. Day)  
28-31 Staff on Duty (Adm. Days)

**August 2026**

3 First Day of School  
7,14,21,28 Half days of School  
School Days: 21

**September 2026**

7 Labor Day (Federal Holiday)  
4,11,18,25 Half days of School  
School Days: 21

**October 2026**

5 End of 1st Quarter  
9 Full Day Parent/Teacher Conferences (No School)  
12 Indigenous People's Day (Federal Holiday)  
19 Professional Dev. Day (No School)  
2,9,16,23,30 Half days of School  
School Days: 19

**November 2026**

11 Veteran's Day (Federal Holiday)  
23-25, 27 Thanksgiving Break  
26 Thanksgiving (Federal Holiday)  
6,13,20 Half days of School  
School Days: 15

**December 2026**

18 End of 2nd Quarter  
24 Christmas Day (Federal Holiday)  
21-23,25,28-31 Christmas Break  
4,11,18 Half days of School  
School Days: 14

**January 2027**

1 New Year's Day (Federal Holiday)  
4 Professional Dev. Day (No School)  
18 Dr. Martin L. King, Jr. Day (Federal Holiday)  
8,15,22,29 Half days of School  
School Days: 18

**February 2027**

15 President's Day (Federal Holiday)  
26 Professional Dev. Day (No School)  
5,12,19 Half Days of School  
School Days: 18

**March 2027**

9 End of 3rd Quarter  
12 Full Day Parent/Teacher Conferences (No School)  
15-19 Spring Break  
5,26 Half days of School  
School Days: 17

**April 2027**

2,9,16,23,30 Half days of School  
School Days: 22

**May 2027**

7,14,21 Half days of School  
18 FACE Classroom Celebration  
20 8th Grade Promotion, 10:00am  
20 Kindergarten Classroom Celebration, 1:30pm  
21 Last day of School/End of 4th Quarter  
24 Staff on duty (Adm. Day)  
24 Last Day of SY 2025/2026 Contracts  
School Days: 15

Concurred by School Board: 03/09/2026



- ◆ Half days of School (dismissal at 12:15pm)
- ◆ Full days of School (Monday to Thursday) (dismissal at 3:00pm)

Phones: (505) 786-6159/6160  
Fax: (505) 786-6163  
Website: www.ccswarriors.bie.edu

School Days: 180  
Federal Holidays: 08  
School Vacation Days: 17  
Administrative Work Days: 10